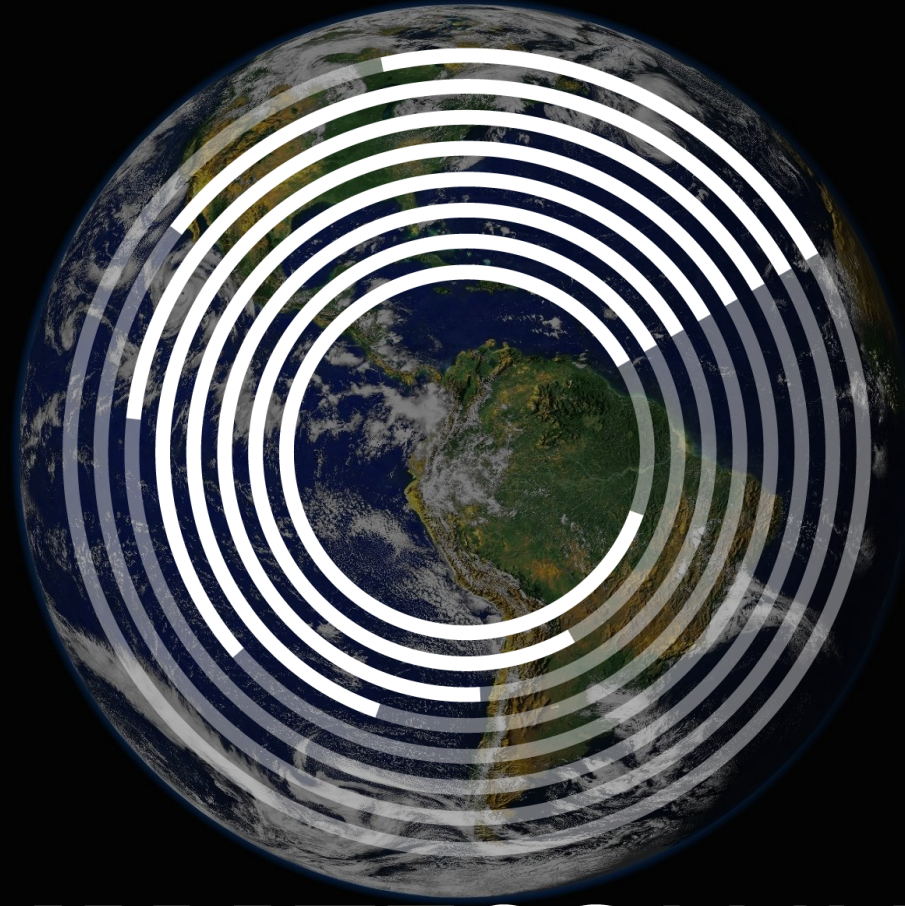




CLIMATESCANNER



CLIMATESCANNER

*A global initiative by SAls for assessing
governments' action for climate*



Goal 13

Take urgent action to combat climate change and its impacts.

A priority of **Intosai**

ClimateScanner

Objectives

- **Assess** national governments' climate action
- **Consolidate** data in a global overview
- **Support** decision for future works
- **Communicate** relevant information
- **Share** knowledge and experience
- Contribute to Intosai's **global voice**

Rapid review on 2 levels and 3 axes

Governance

Financing

Public policies

International

National



CLIMATESCANNER



INTOSAI



INTOSAI
Working Group
on Environmental
Auditing

FEDERAL COURT OF ACCOUNTS



ClimateScanner tool

Basic structure

Small number of components

Governance

Component G1

Component G2

...

Component Gn

Financing

Component F1

Component F2

...

Component Fn

Public policies

Component P1

Component P2

...

Component Pn

ClimateScanner tool

Basic structure

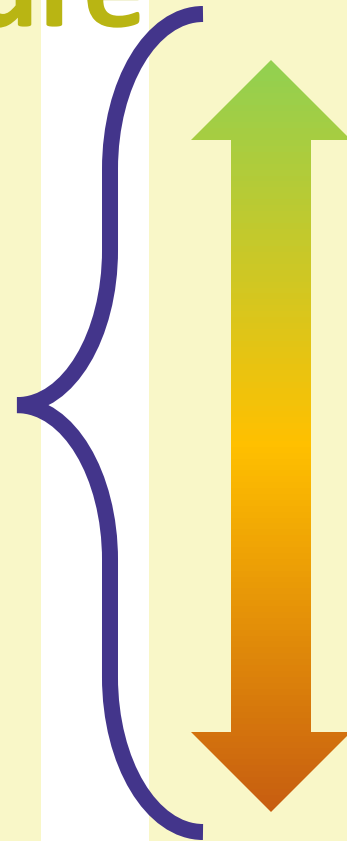
Governance

Component G1

Component G2

...

Component Gn

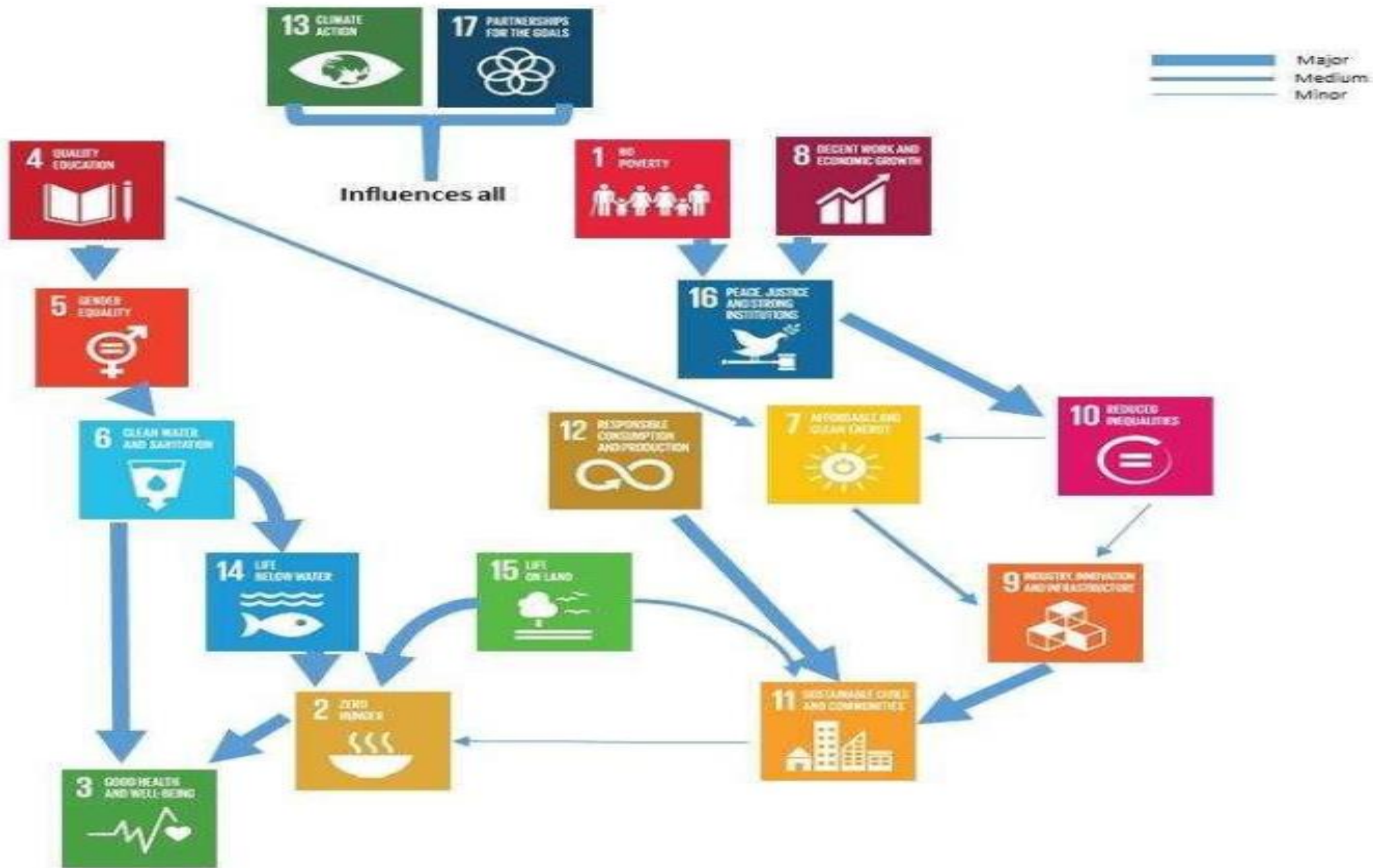


Score	Scale of implementation
3 items	Advanced
2 items	Intermediate
1 item	Basic
0 item	Insufficient

According to predefined conditions

Strategy
G3. PLANNING

Description of component	Scale of assessment: range 0 – 3		
	Item A	Item B	Item C
	<p>This component assesses if the country has a long-term strategy for addressing climate change and whether there is consistency across it and the NDC.</p> <p>Item C assess if the planning instruments considers the connections of SDGs and Climate Change</p>	<p>Long-term strategy There is a long-term strategy (LTS) for addressing climate change as required at the Paris Agreement (art. 4 (19)).</p> <p>Evidence: The document that establishes the long-term strategy.</p>	<p>Alignment to NDC The current NDC is aligned with the LTS.</p> <p>Evidence: Assessment of NDC and the LTS, showing they are compatible and with no major contradictions.</p>



Search by country:

Brazil



Home

About

Global

National

SAIs' Capacities

Assessments



Brazil

Governance



Financing

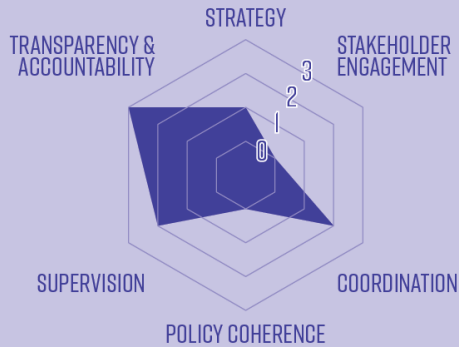


Public policies

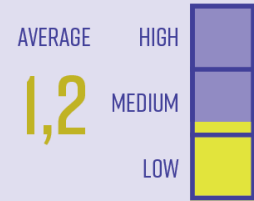


Brazil

GOVERNANCE



GOVERNANCE MATURITY



PUBLIC POLICIES

ACTION GAUGE



ROLES & RESPONSIBILITIES
RESOURCES & CAPACITY
FOLLOW-UP & REVIEW
IMPLEMENTATION
REGULATION
PLANS & GOALS
POLICY DESIGN
DIAGNOSTIC

MITIGATION

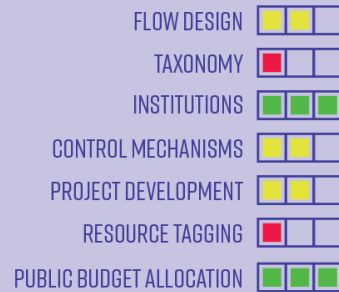
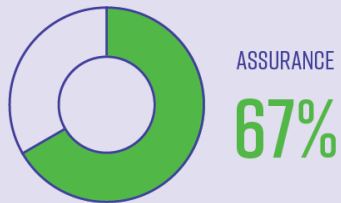


ADAPTATION



FINANCING

RISK ASSESSMENT



Draft

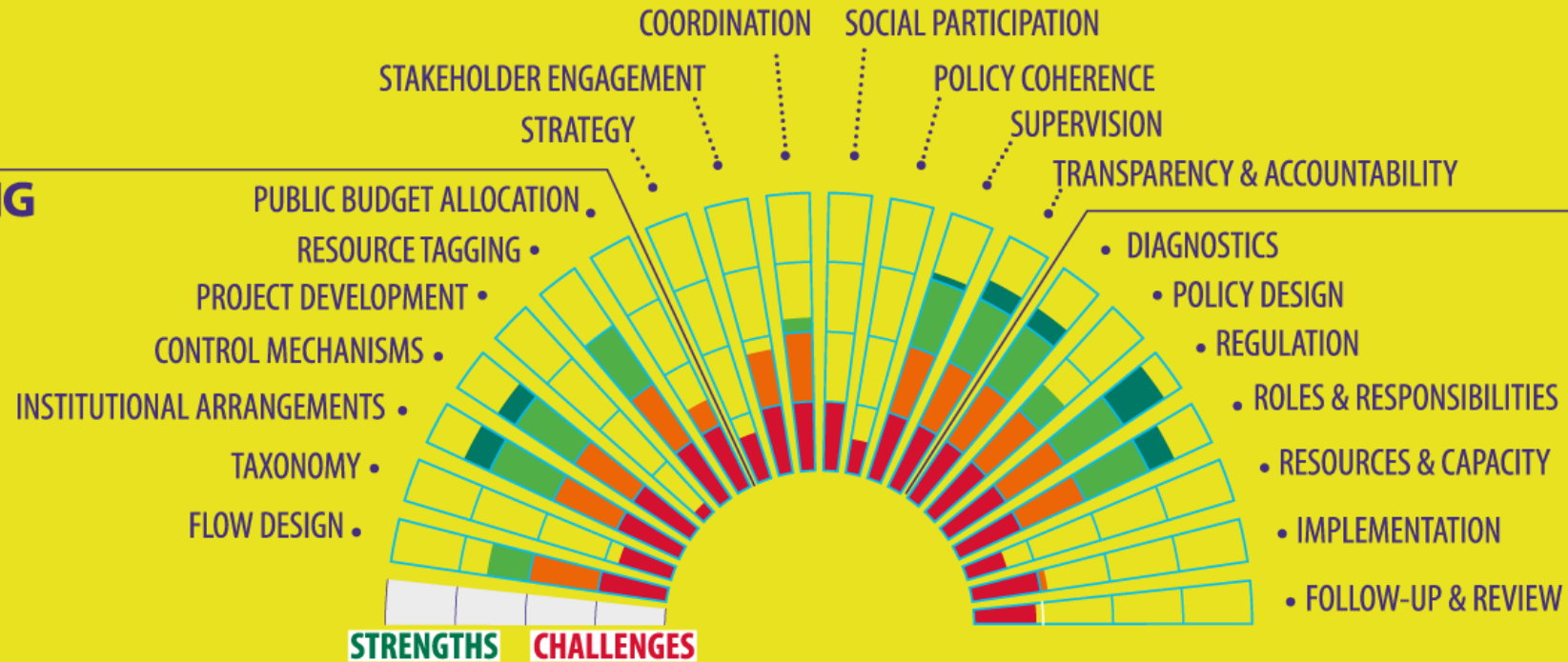
Standardized assessments



GOVERNANCE

FINANCING

PUBLIC POLICIES



CLIMATESCANNER

GLOBAL STRENGTHS & CHALLENGES IN CLIMATE CHANGE ACTION

Global Picture
Draft

Governance

Institutionalization



Cordination



Monitoring and supervision



Transparency and accountability



Engagement with stakeholders



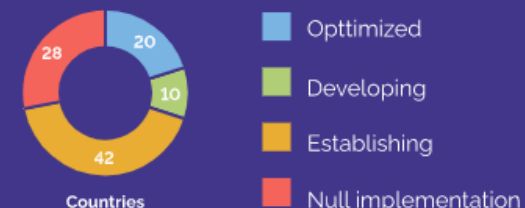
Strategy



G8. Long- and mid-term planning

Long-Term Strategies (LTS) offer countries a long-term perspective to inform the design of development trajectories—and crucially, near-term decisions—that align with the Paris Agreement goals. Robust Nationally Determined Contribution (NDC) implementation, in turn, can align near-term decisions with LTSs as well as sustainable development, inequality reduction, and growth objectives.

Level of implementation



Per component



Project schedule

2022

Planning phase

Project design

Publicizing and networking

Official launch
(XXIV Incosai, Rio,
NOV/22)

2023

Design phase

Tool design

Pilot tests

Adjustments and finalization

2024

Execution phase

Capacity building

Tool application by SAs

Consolidation and communication



Executive Group Composition

Brazil

Canada

Chile

Colombia

Eur. Court of Auditors

Finland

India

Indonesia

Kenya

Maldives

Morocco

New Zealand

Philippines

Slovakia

Thailand

United Arab Emirates

United Kingdom

United States



#ISupportClimateScanner

**sites.tcu.gov.br/climatescanner
climate@tcu.gov.br**